

A photograph of a modern interior space featuring white walls, a dark grey staircase, and a large glass door with a black handle. A semi-transparent grey rectangle is overlaid on the right side of the image, containing the text.

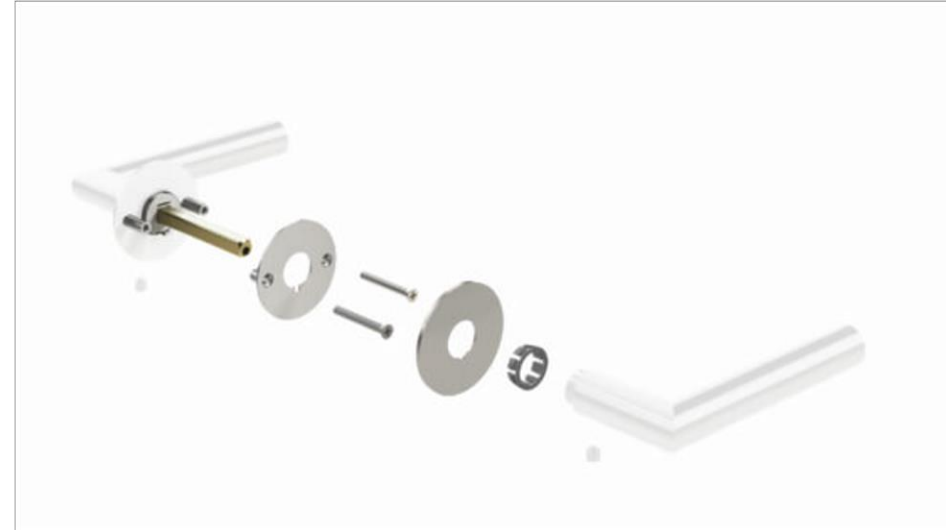
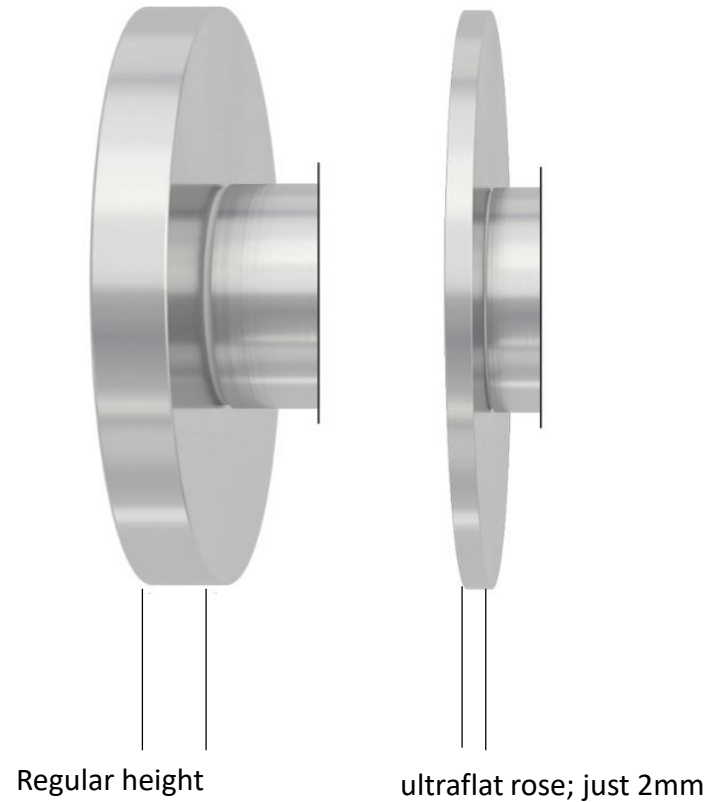
Product presentation

Handles, glass door locks, sliding door systems



GRIFFWERK Products

Productline Piatta-S-technique



Flush optics

- 1) Flat rose made of stainless steel
- 2) Slide bearing, maintenance-free; invisible
- 3) Easy and fast installation
- 4) fixed rotatable
- 5) Pre-mounted handle for one-side

INNOVATION smart2lock



The handle that handles both.
2 in 1. Close and lock.



Lock and unlock with just one click.



INNOVATIONSNEUHEIT smart2lock



Just be on your own.
Privacy with one click.

BEDROOM



Home OFFICE



BATHROOM | WC



YOUTHROOM



Clever technology. New door aesthetics.
Suitable for every door and every house.



INNOVATION smart2lock



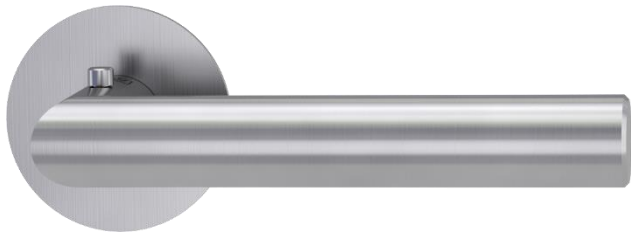
Fast and simple emergency release



INNOVATION smart2lock



with integrated locking systems



Lucia Piatta S S²L – stainless steel



Lucia Schraub S²L - stainless steel



TRI 134 S²L - stainless steel



Lorita Professional S²L - stainless steel

smart2lock
by GRIFFWERK



Jette Crystal S²L - stainless steel



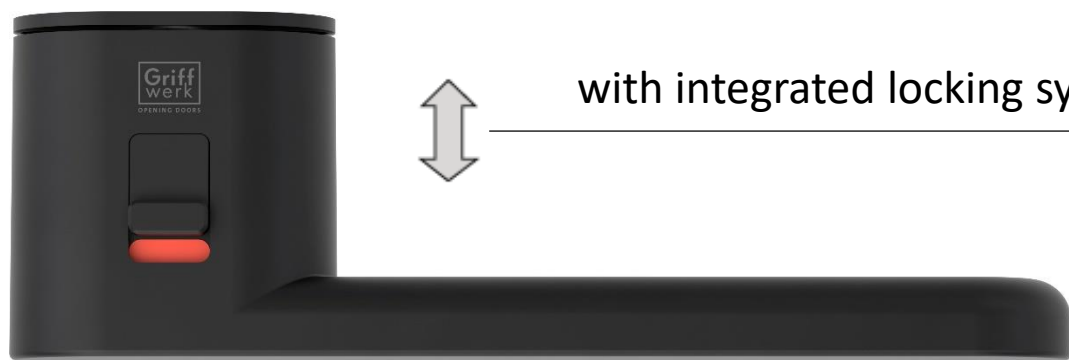
ROSELESS

ALL IN ONE SIMPLICITY



ONE Series

Roseless with Smart2Lock



with integrated locking systems



R8 ONE
with smart2lock
or as UV version



AVUS ONE
with smart2lock
or as UV version



Velvetgrey | Graphiteblack

smart2lock
by GRIFFWERK



New surfaces Tonalities: velvet grey, graphite black, cashmere grey

Glass door lock - Puristo S



- 1-Hand-handling
- style for comfort
- adjustable spring force and
- handle position

new in cashmeregrey



Glass door lock - FRAME



10 years FRAME

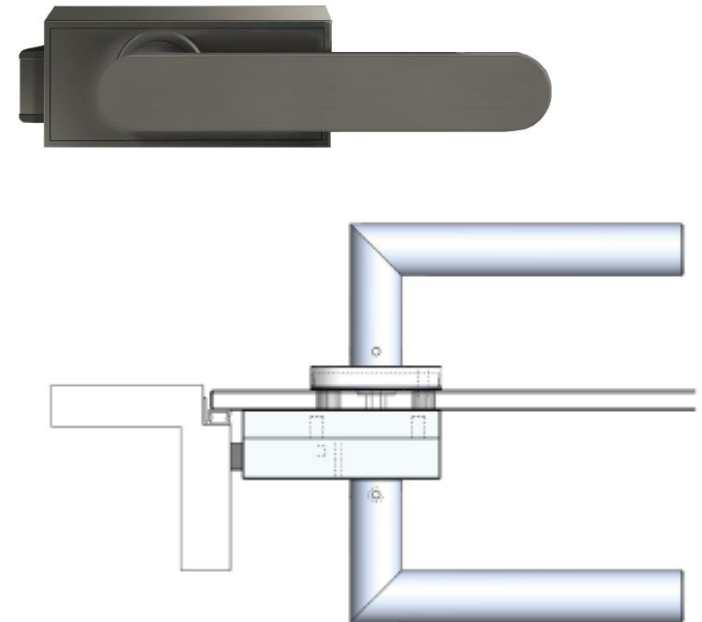


INNOVATION glas door lock Cube



Keyword: reduction

- reduction of fittings to a minimum
- Flush glass door
- continuous optics for door handles on glass and wooden doors
- trend towards flush door solutions



Sliding door systems



Possible Variations

- 0.8 mm aluminum profiles on the glass
- Silent move system
- Suitable for wooden doors
- 8 or 10 mm glass
- Resellience up to 120 kg
- Wall and ceiling installation possible
- Soft-retraction



Stainless steel



Graphite black



Cashmere grey



white

INNOVATION Planeo Loft



Possible Variations



Version 1



Version 2



Version 3

INNOVATION Planeo Silent & E-Lock (release 2020)



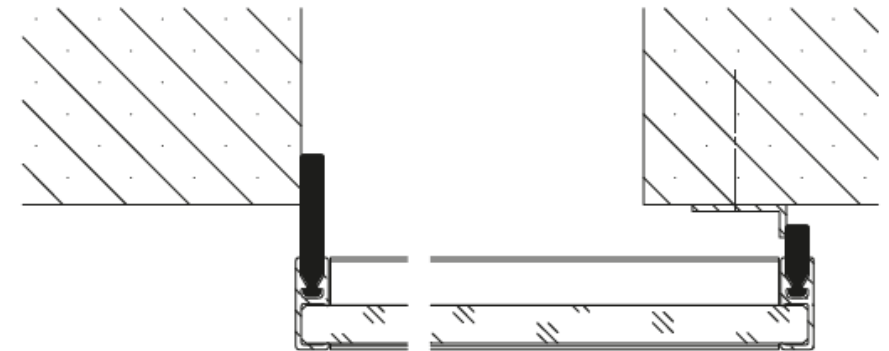
PLANE0 E-LOCK 



Seal for sliding door system
PLANE0 120

What if sliding doors would be...?

- noise-reducing
- moisture barrier
- odour-blocking



FEEDBACK, questions and answers

What do you think about it?

